



Model T C-200 > Warming System

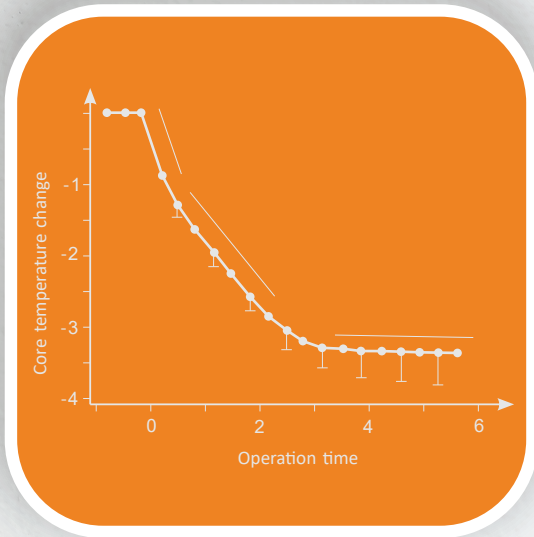


Perioperative
temperature management

What is the hypothermia?

Hypothermia is defined by Surgical Care Improvement Project (SCIP) as a core body temperature less than 36°C. It occurs for a number of reasons, including:

- Anesthesia
- Patients getting cold on the ward when waiting to go to theatre
- The use of non-warmed intra-venous (IV) and irrigation fluids
- Operating room temperature
- Exposure of the body interior during surgery

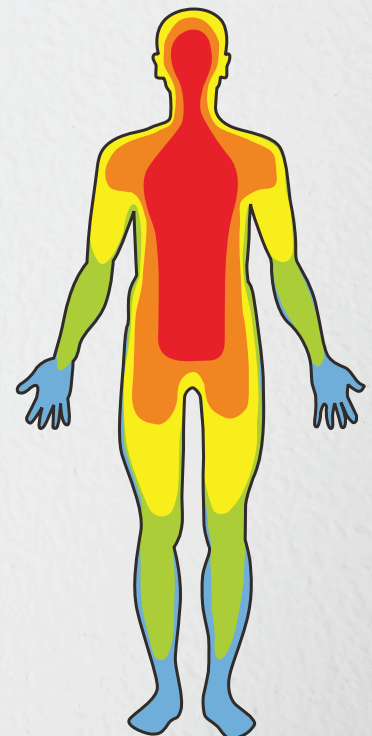


The importance of maintaining normothermia

Maintaining a patient's normothermia is necessary to reduce the risk of adverse effects associated with hypothermia. Hypothermia can lead to significant complications:

- Shivering
- Arrhythmias
- Coagulopathy
- Increase the risk of surgical site infections (SSI)
- Increased cardiovascular stress
- Delay wound healing
- Prolonged time to recovery

Model TC-200 warming system provides a comprehensive solution that can effectively prevent and treat hypothermia.



Model TC-200 > Warming System

TC-200 system consists of a reusable warming unit and a single-use disposable warming blankets. This unit is connected by a rubber hose to blanket that is heated by circulating warm air, thus maintaining a patient's core body temperature.



Features

Safe

- Advanced dual temperature sensor design
- Fault alarms: over-temperature, under-temperature, filter maintenance
- Air filter to keep effective filtration
- Precise temperature settings controlled within +/-1.5°C

Powerful

- Reaching the set temperature within 5 minutes
- Particular heat output design to have quicker heat transfer
- Unique micro-holes on the surface of the blanket to keep heat evenly distribute
- Wide range of blanket shapes and sizes

Simple

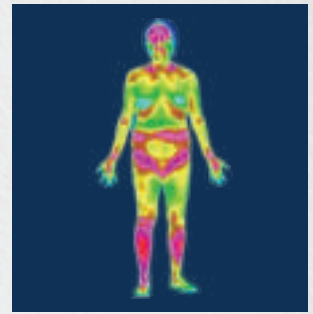
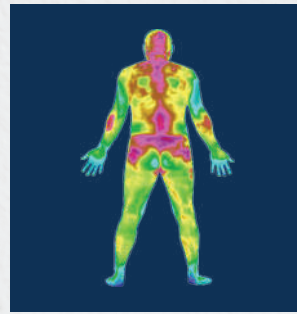
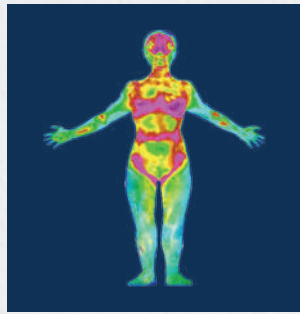
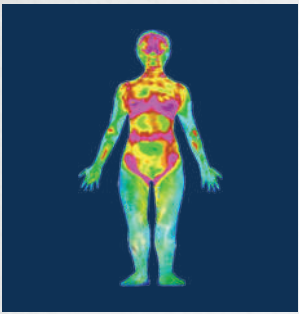
- Intuitive operation, almost training free
- Can be clamped to an IV pole or placed on a hard surface



Application



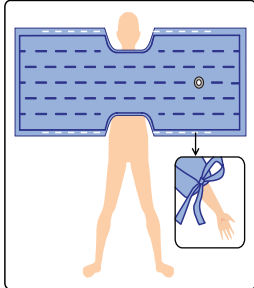
Application



Perioperative temperature management



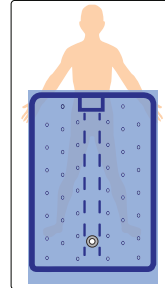
Warming Blankets Specification



Upper Body Blanket
210×80cm
Model UP-121

Can be used for patients in abdominal surgery and lower limb surgery.

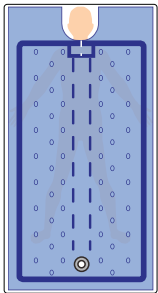
Suggested Applications: OR, PACU, Pre-op, Surgery



Lower Body Blanket
150×105cm
Model LW-150

Can be used for patients in upper limb surgery and chest surgery.

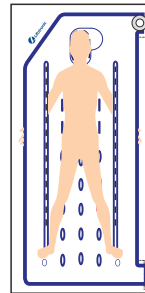
Suggested Applications: OR (Upper body surgical procedures)



Full Body Blanket
217×110cm
Model FU-221

Can be used in Post Anesthetic Care Unit.

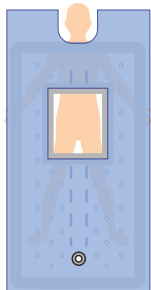
Suggested Applications: PACU



Full Underbody Blanket
210×110cm
Model UN-321

Can be used in special operation (Cardiothoracic, Vascular, Trauma).

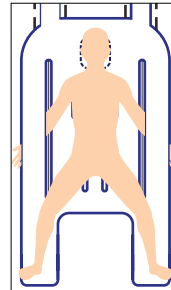
Suggested Applications: OR



Surgical Access
217×110cm
Model SR-521

Large surgical access window provides patient access for the surgeon.

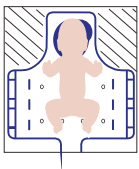
Suggested Applications: OR (Spinal, Abdominal, Hip, Pelvic)



Lithotomy Underbody Blanket
170×100cm
Model LT-417

Delivers access for procedures including the lower extremities, abdominal, peritoneal and pelvic cavities.

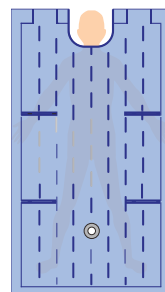
Suggested Applications: OR (Urology, Gynecology, Colorectal, Orthopedic Knees, Orthopedic Ankles, Caesarean Section)



Pediatric Underbody Blanket
92×82cm
Model PS-309

Can be used in neonatal and Pediatric patients.

Suggested Applications: OR (Pediatric, Cardiothoracic, Vascular, Trauma)



Multi-Access Blanket
217×110cm
Model MA-421

Convenient panels allow quick access to the patient's chest, arms, torso, and lower body.

Suggested Applications: PACU

Specifications

Model No.	TC-2 00
Temperature Modes	Five:32°C,35°C,38°C,43°C, Ambient air
Airflow Modes	High: ≥30CFM
	Med: ≥28CFM
	Low: ≥26CFM
Interface	OLED Display
Noise	≤52dB (High fan setting)
The Length of Hose	2m
Power Supply	220V,50Hz
Weight	7.7kg
Controller Dimensions	Height: 33.0cm
	Width: 37.0cm
	Depth: 29.0cm



VNG Medical Innovation System Pvt. Ltd.

Plot No.197, JLPL Industrial Park, Sector 82, Mohali, Punjab -160071

+91 77 175 93554

www.vngmedical.com

info@vngmedical.com